

Welcome!

**READ EVERYTHING THOROUGHLY. YOU WILL BE HELD RESPONSIBLE.
THIS DOCUMENT MAY CHANGE FROM EVENT TO EVENT.**

You are expected to know the applicable rules published in the [Club Codes & Regulations](#) (CCR), some of which have been outlined in this document. If you do not have a CCR, it is strongly recommended that you [click here](#).

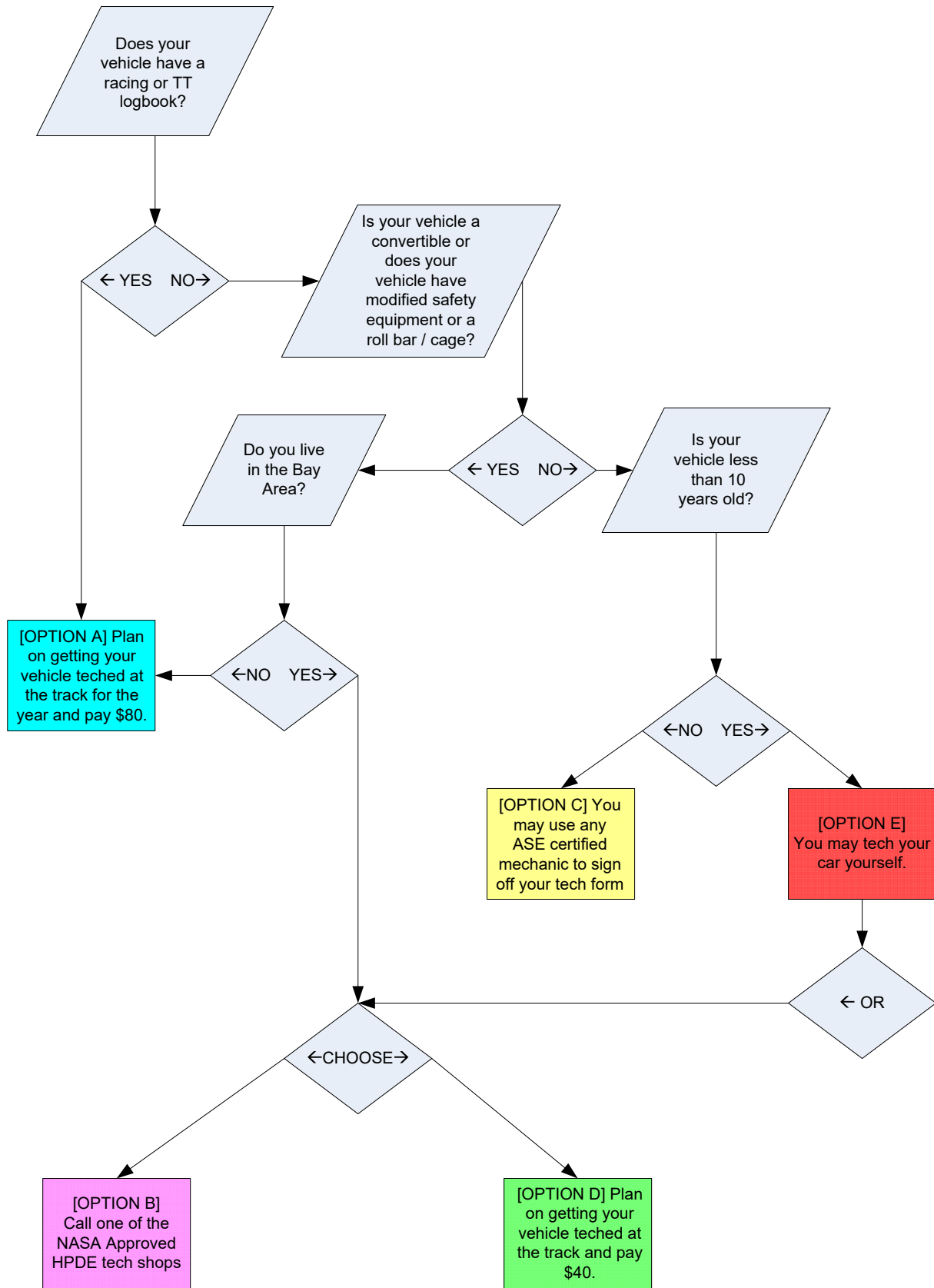
Miscellaneous Notes:

- HPDE stands for "[High Performance Driving Experience](#)." The levels of HPDE are 1, 2, 3, and 4. Often referred to as "Group 1," "Group 2," etc. Note- HPDE 1 is the same as Group 1.
- If you have any questions, NOW is the time to get an answer. Most answers can be found in the CCR or on the web site <http://www.drivenasa.com>. The web site will be your best source of up to the minute information. Also, check this source: <https://community.drivenasa.com/>. If you don't find the answer you are looking for, email norcal@drivenasa.com.
- **If you entered online, your confirmation is your receipt.**
- **YOUR CAR NUMBER IS THE ONE YOU REQUESTED UNLESS WE TELL YOU OTHERWISE!** You can purchase cut vinyl car #'s from the I/O Port vendor trailer at all NASA NorCal events.
- A schedule for the event may or may not be emailed to you ahead of time. Regardless, each pre-registered driver should be there by 7am or earlier. Most of the time, the driver's meeting starts at 7:30am. Please leave enough time to line up at the gate to sign in and also to find a proper parking place. A link to the schedule will be emailed to you by Wednesday evening before each event. We recommend you print and bring a copy.
- **If you have pre-registered** (i.e. online), and pre-teched (HPDE), then **do NOT bother to go to registration** at the track. Go directly to the driver's meeting.
- HPDE drivers- Bring your signed tech form (pre-tech or track-tech) to the grid when you get ready to go on track for your first session. Place it under your windshield wiper; a steward will collect it the first time on grid. He/ she will place a tech sticker on your windshield. See below for more information regarding tech.

HPDE / Open Track- Tech Inspection Information

Your car needs to pass a technical inspection in order to get on the track. Please use the information on the next page to determine your tech inspection options.

HPDE / TT TECH FLOW CHART



How do I get my car inspected?

OPTION A:

If you have a current logbook from NASA, SCCA, PCA, BMW, VARA, CSRG, IMSA, GA, or FIA AND are in TT, then fill out this [HPDE Tech Form](#) yourself and present it with your logbook to the inspector.

If you do not have a logbook and you choose to tech your car at the track, you must:

1. Pay the tech fee (race cars \$80, HPDE drivers \$40), and
2. Have your car ready for tech at 6:30 AM, whether you preregistered or not.

OPTION B:

1. View the recommended [HPDE tech inspection stations](#) and make an appointment.
2. Call early (2 weeks before the event is recommended). The inspection should take about 10 minutes, and it is free.
3. **Do not show up at the shops without an appointment.** They are busy and may not be able to accommodate you.
4. Print out the [HPDE Tech Form](#) and take it to the tech shop.
5. Please inspect your car closely before taking it to a tech shop.

OPTION C:

You may use any ASE certified mechanic to tech your car and sign your form. Unless you use one listed as a NASA approved shops, your auto may or may not charge you for tech. Please take the [HPDE Tech Form](#) with you.

OPTION D:

If you choose to pay the \$40 tech fee at the track, you must:

- A - Have your car ready for tech at 6:30 AM, whether you preregistered or not.
- B - Have your car ready for tech at 6:30 AM, whether you preregistered or not.

OPTION E:

HPDE self tech for all cars that meet the following requirements:

- A) The vehicle must have a permanent roof (no convertibles with or without hard tops)
- B) The vehicle must be less than 10 years old
- C) No modification to OEM safety equipment which means:
 - a. Must have OEM seat belts
 - b. Must have OEM seats
 - c. Must not have a roll bar
 - d. Must not have a fuel cell installed

If your car meets these requirements, use the [HPDE Tech Form](#).

To apply for an HPDE / TT Vehicle Logbook, please see the Tech staff at the track. More about Race Car Tech below:

Race Group- Tech Inspection Information

How do I get my car inspected?

All competition vehicles must have a NASA logbook. To obtain a NASA logbook it is required that you have the car inspected at one of the authorized shops. This inspection checks the design, construction, and installation of safety related items. The vehicle must go through a renewal inspection each calendar year before it will be allowed in competition. These inspectors are the only authorized source for logbook and technical inspections.* Questions and needs for safety related equipment can be answered at [/O Port Racing](#)

*Note: Special arrangements may be made to have your car inspected at the track in the event of hardships. However a NASA inspector may not always be available. You may lose some time at the track as you wait for inspection. Optionally, one of the listed shops may be able to send an inspector to you, which may involve a more extensive fee. To make arrangements to get an annual or get a logbook at the track, you can send email to: hans.dinse@gmail.com and your request will be forwarded to all the available inspectors.

Fees

Initial certification costs should be \$100 for new cars, or \$80 for renewal fee for cars with existing NASA logbooks. Those that make arrangement with a race tech inspector to have the inspection done at the track may be charged up to \$125.

Click below for a list of Race Car Tech Stations. They are listed in order of area code. <https://nasanorcal.com/racecar-tech-inspection-shops/> **Appointments are required.**

Competition Vehicle Inspection at the track:

Once you have completed your annual inspection, obtain an annual windshield decal from the NASA Tech staff at the track. Enter your own data for each race into your Vehicle Logbook.

All Drivers

What do I do when I get to the track?

1. Gates open at 6:00 AM. It is better to be early than late!
2. **Look at the paddock map (if available) and park in the appropriate area. Parking rules will be strictly enforced. Your cooperation is greatly appreciated. This map should be posted and/or handed out at the front gate.**
3. For anyone that is not pre-registered: Have your HPDE/TT tech inspection completed before proceeding to registration, if applicable. Racers fill out their own tech sheet and keep it with their SIGNED log book for the weekend.
4. Registration will open at 7:15 AM (or earlier).
5. **GET A FRESH COPY OF THE SCHEDULE. PREVIOUSLY OBTAINED VERSIONS MAY BE DIFFERENT.**
6. All participants must display the appropriate credentials. If wristbands are used, drivers should wear the wristband on their left wrist. Passengers in the HPDE group that are issued a wristband credential shall wear it on their right wrist.
7. No passengers are allowed in any race group session, including warm-up, practice, etc. Occasionally, NASA will set aside a special passenger session. There are special rules of conduct for these rare times. Special announcements will be made when these occasions arise. During these sessions, the track is considered CLOSED. Minors may ride along, and a speed limit of 25MPH is enforced. Also, it means COMMON SENSE. This means no tail gaiting, no hot-rodding, no hanging back to "get a run," and no squealing tires for ANY REASON! These sessions are often called "Parade Laps."
8. All passengers and drivers in HPDE must wear a helmet and seatbelts (includes shoulder belts). No one under 18 years of age is allowed to be a passenger. This DOES NOT include the special passenger rides, as provided by the clause above.
9. Passengers must sign a Waiver Form in pre-grid before being allowed on track. NASA holds the driver solely responsible for the safety of their passenger. Furthermore, no one should take a passenger out without possessing **proper automobile insurance meeting with the state laws**. This is for the driver's protection as well as the passenger's. Compliance with this rule is the responsibility of the driver. Passengers are encouraged to ask for proof before getting into someone's car.
10. Complete your last minute preparations and be ready to attend the mandatory drivers' meeting for your group. You must be ready and on time or you will miss crucial information, and may be disallowed entry on to the track.
11. Any driver that misses a driver's meeting must check in with the HPDE/TT Director or Race Director for the series before going on track.

RULES AND REGULATIONS:

Note: This is a **brief outline**. Read the **Club Codes and Regulations** to learn the full set of rules that you must be familiar with.

1. **PHOTOGRAPHS MAY ONLY BE TAKEN FROM WITHIN THE PADDOCK AREA and other spectator areas, NOT THE PITLANE. NASA-Media pass holders are exempt. Media credentials can be obtained from the regional office.**
2. Your NASA membership must be current and in good standing to be eligible to participate. This is YOUR responsibility.
3. The gates should be open until midnight on Friday night and Saturday night, but always check with the track to be sure. Do not try to sneak into the track afterwards.
4. Most tracks sell race gas, however we recommend that you do not rely solely on this source for your gasoline needs. Your car will use a lot of gas while driven at high speeds.
5. Please do not: dispose of tires at the track, litter, or plug into any track power outlet.
6. Children must remain under adult supervision at all times.
7. The responsibility for passing safely rests solely with the overtaking driver. If there's a faster car behind you let him/her go by safely. More details on passing can be found in the CCR.
8. Drivers shall be responsible for the actions and conducts of themselves, guests, and their crewmembers. An offense committed by a crewmember can be directly chargeable to the driver.
9. No alcoholic beverages may be consumed by any participant. See the CCR for definition of "participant."
10. Only enrolled participants are allowed to operate a vehicle on the track.
11. Anyone not officially entered in the event caught operating a vehicle on the track at anytime will be immediately ejected from the event along with that person's friends, guests, and crewmembers. This rarely happens, but usually earns all members of the party a permanent lifetime ban from all NASA events, nationwide.
12. We will be running rain or shine. If it looks like it is going to rain bring rain tires and appropriate equipment.
13. **Do not start your race engines before 8:00 AM or after 6:00 PM, not even for a few seconds. Failure to obey this rule can result in harsh penalties. Typical minimum penalty is a \$200 fine. THIS IS SERIOUS!**
14. Failure to obey the flags can result in loss of track time or ejection from the event. Passing under the yellow flag will not be tolerated.
15. You must have boards under all jackstands to avoid damage to the paddock asphalt.
16. There will be no loaner helmets at the track by NASA. You are responsible for bringing your own helmet. I/O Port Racing offers helmets for rental if you contact them directly: ken@ioportracing.com.
17. No loose objects inside the car. All cameras must be firmly and safely mounted to the car, no holding of phones.
18. You must keep water on hand in the paddock in case of fuel spillage. A gasoline spill can quickly destroy the asphalt surface; if not washed away with water, the bill to fix the damage can quickly add up to \$1,000 for which you will be liable.
19. You will be held liable for all damages, caused by you and or your guests, to walls, tires, fencing, and any part of the racing facility, including the paddock.
20. NASA prohibits skateboards, roller-skates, in-line skates, or motorized skateboards. Therefore we highly recommend you leave these items at home. Furthermore, children can be seriously hurt because of collisions with traffic in the paddock. **UNDER 18 MINORS MUST TRAVEL ON FOOT ONLY. FINES WILL BE IMPOSED!!**
21. You must have a valid driver's license to operate any bicycles, mopeds, etc. while anywhere on track property.
22. **There is normally a gate fee of \$10 for everyone, except officials. You must show your Official's ID to get in free. If you forget your ID, then pay the \$10 and get it back from Registration.**
23. Passengers are allowed in HPDE groups. Passengers must sign release waivers at pre-grid and get wrist bands before being allowed on the track and pay \$5.00. Failure to do so can result in permanent expulsion of driver from NASA. Passengers must have at least the same minimum safety equipment as required of the driver. All passengers must be at least 18 years old.
24. All race group and Time Trial cars must have **AMB or MyLaps timing transmitters** on board. Drivers who need a transmitter may rent one from I/O Port by contacting ken@ioportracing.com. Drivers are expected to check the printout after practice to ensure that their times are being picked up. Any problems must be reported to Timing & Scoring or no times will be available for your qualifying.

TIPS:

1. Camping is usually permitted, however a fee may be collected. In ANY EVENT: No noise, fires, etc. after dark!!!! Offenders will be thrown out!
2. It is highly recommended that you keep a good fire extinguisher (required for race groups) in your car securely mounted (metal brackets) within reach of the driver.
3. We suggest that you bring air for your tires.
4. We can always use volunteer workers to help out. This is a good way to get your family or friends involved. Report to registration.
5. Bring some wheel blocks with you. After a hard drive your brakes become very hot and it may not be a good idea to set your parking brake.
6. You may want to bring some white shoe polish as an aid to help you set your tire pressures.
7. Bring a quality tire pressure gauge.
8. Dress warmly. It can get very cold and/or windy at the track especially in the early morning and evening. Additionally, you will driving with your windows down. Plan accordingly.
9. If you are sharing a car with someone else, make sure that they have been placed in a different group.

HPDE / SCHOOL / OPEN TRACK FLAGS:

(Race Flags: see CCR) Flags are the only form of communication we have with you while you are on the track. Therefore, it is extremely important that you know what each flag means. Please consult the CCR for a more complete list and descriptions.

- *Green.* Session is open.
- *Yellow.* Slow down. Danger ahead. Absolutely no passing until after the incident or the next manned non-yellow flag station. Caution: There may be more than one incident and or yellow flags.
- *Black.* We want to talk to you. Complete current lap and pull into the pits for consultation. Do not go back paddock.
- *Checkered.* Session is over. Complete current lap cautiously and exit via pit lane. Passing is permitted after checker, applicable passing rules apply.
- *Red.* Emergency. Come to an immediate and controlled stop on the side of the track in a safe location.
- *Double Yellow.* Full course yellow. No passing. Pace Car may be on track.

Note: Failure to obey the flags will result in loss of track time. Please refer to the CCR for more details.

Pace Car: Keep pace. Do not pass the pace car unless motioned to do so by the pace car personnel.

Safety Trucks: You may pass safety trucks in a safe and controlled manner.

FINAL NOTE:

This event can be dangerous or it can be very enjoyable. We all try to reduce the danger as much as humanly possible. The above rules are very strict and sometimes very harsh. But to make the day safer and more fun for everyone rather than just a few, the rules must be followed and enforced. We want you to spend more time on the track driving rather than looking for your fender by Turn 2! The Event Director(s) reserves the right to make any changes in this event at any time with only such notice as circumstances permit.

We now have a **children's play area** at the track. This has become a big hit, so bring your kids and let them have some fun. [Heck, bring the neighbors kids! Family fun is the main focus for the future of NASA!]