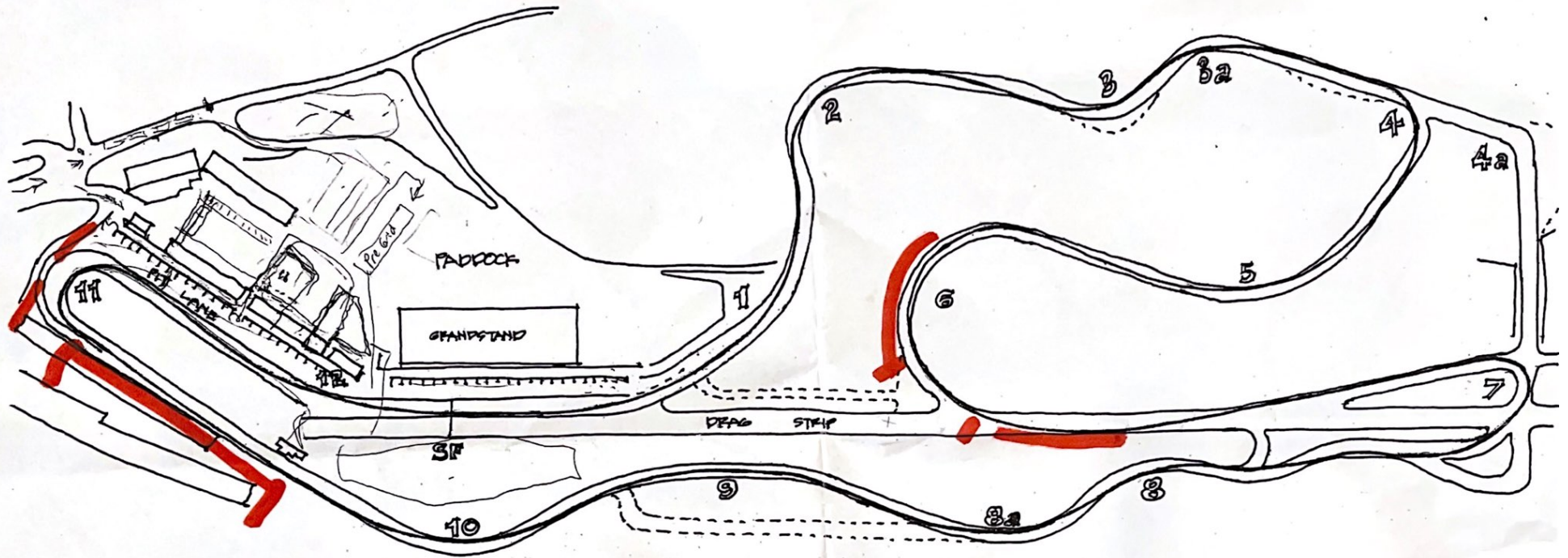


— AREAS MARKED RED ARE STRICTLY PROHIBITED —



Photographers must, AT ALL TIMES:

- Remain vigilant - expect the unexpected
- Remain visible to track/corner workers
- Request corner worker approval before approaching a hot/active track
- Follow corner worker's direction
- Remain behind the K-wall
- Follow Sonoma Raceway and NASA Officials direction



Infineon RACEWAY

© FIA 10/02
8/04